



Schooling Fun Show

At the
Horse Park of New Jersey



All proceeds benefit
THE HORSE PARK of NEW JERSEY

Sunday October 27th

*Costume Class, Hunter Derby,
Hunt Teams, Standardbred &
Dressage, and More.*

T.I.P Points, ESDCTA Points, and
other amazing prizes!!!

Visit <http://www.horseparkofnewjersey.com>

Schooling Fun Show

Volunteer Show Officials

Judges

Kelly Ross – Equitation/Hunters

George Dahms - Jumpers

Cindy Glaser (L)– Dressage

Show Secretary

Sue Ruble

Volunteer Show Committee

Carla Bird

Show Manager/Course Designer

Lori Thompson

Dressage Secretary

Jan Buchalski

Show Treasurer

Diane Sigafoos

Rules & General Information

1. Entry fees are \$15 per class unless otherwise noted.
Non-refundable office fee \$10.
2. Horse Park members receive \$10 discount. A valid membership card is required to receive discount.
3. Back number required for all horses. Non-competing horses \$15 schooling fee.
4. Proof of negative Coggins dated within 2 years of show date.
5. Show is held rain or shine.
6. Martingales are not permitted in under saddle classes.
7. Heeled boots and ASTM certified helmet required whenever mounted. EVERYONE UNDER 18 MUST WEAR A HELMET IN ORDER TO COMPETE IN ANY CLASS, INCLUDING WESTERN DIVISIONS.
8. The Horse Park of New Jersey, its owners, operators, employees, and other entities will not be responsible for damage, injury, or loss to any person, animal or property of exhibitors or spectators occurring at this show.
9. Dogs must be on a leash. \$20 NO LEASH FINE
10. Entry forms available at www.horseparkofnewjersey.com
11. The Show Committee reserves the right to cancel, combine, change rings, or add any classes or schooling as deemed necessary.
12. There is a \$35.00 fee for each returned check.
13. Please use appropriate trash and manure containers.
14. Ribbons and ANY prizes WILL NOT be mailed. Prize table is located in front of the show office.
15. Please be sure that all entries are signed correctly.

PHONE NUMBER DAY OF SHOW: 732 567-2523

Equitation Classes

Entry Fee for each class \$15.00

Beginner Rider Division

Open to riders 12 years and younger. Riders not to have shown over fence height 2' or higher.

Class 1 – Beginner Rider W/T

Class 2 – Beginner Rider W/T/C

Class 3 – Beginner Rider X-Rails

Grand Champion and Reserve Champion

Hunter Classes

Entry Fee for each class \$15.00

Unless otherwise noted

Beginner Hunter Division

Open to riders that have not shown over fence height 2' or higher. (Adults encouraged) May trot course. Fence height 18"

Class 4 – Beginner Hunter X-Rails

Class 5 – Beginner Hunter X-Rails

Class 6 – Beginner Hunter Under Saddle

Grand Champion and Reserve Champion

Green Hunter

Open to all. (T.I.P. High Hunter Jr/Sr) May trot corners. Fence height not to exceed 2'

Class 7 – Green Hunter Over Fences

Class 8 – Green Hunter Over Fences

Class 9 – Green Hunter Under Saddle

Grand Champion and Reserve Champion

Low Hunter

Open to all. (T.I.P. Low Hunter Jr/Sr) Fences not to exceed 2'3"

Class 10 – Low Hunter Over Fences

Class 11 - Low Hunter Over Fences

Class 12 – Low Hunter Under Saddle

Grand Champion and Reserve Champion

Hunter Classes Cont.

High Hunter

Open to all. (T.I.P. High Hunter Jr/Sr) Fences not to exceed 2'6"

Class 13 – High Hunter Over Fences

Class 14 – High Hunter Over Fences

Class 15 – High Hunter Under Saddle

Grand Champion and Reserve Champion

Hunter Showcase Classes

Hunt Team Class – Sponsored by Monmouth County Hunt Club

Entry Fee for each rider \$20.00

Class 16 - Open to all. Fence height 2'3". Teams consist of 2 riders per team over simple set course. Costumes are encouraged!

Prizes 1st Cash to each winning rider. Ribbons 1-6

Hunter Derby Class – Sponsored by Laurel Crest Farm

Entry Fee \$20.00

Class – 17 - Open to all. One round. *Riders must have entered into at least one other class at the selected fence height to participate in the derby.* Show coat and tall dress boots required. The class will be judged at a 2'3" height and a 2'6" height combined. The 2'3" height section will run after class 11 Low Hunter Over Fences and 2'6" will run after class 14 High Hunter Over Fences. One height selection per horse. Class awarded after class 18 High Hunter Under Saddle. Prizes 1st place receives a special prize Ribbons 1-6



PHOTO CREDIT: MEGHAN VALNOSKI

MONMOUTH COUNTY HUNT

ALLENTOWN, NEW JERSEY

We ride August through April . Wednesday and Sunday mornings

We welcome new members and have several memberships types



2019 FALL HUNTER PACE SERIES

September 8, October 13 & November 3

Three divisions & Jockey Club T.I.P. awards!

FOR QUESTIONS AND ADDITIONAL INFO, PLEASE CONTACT US

732-915-0492 OR monmouthcountyhunt@gmail.com

Dressage Schedule

Entry forms and ride times will be posted on the www.HorseParkofNewJersey.com website. If not pre-registered, your ride will be at the end of the scheduled classes, you will not be pinned with the class. **Please email questions to: sfsdressage@gmail.com**

NOTE: *Please Specify Starter Horse/Rider/Open or Junior/Senior Rider*

Entries open on Sept 23rd and close on Oct 17th 2019

Entry Fee \$30 per Test

1 A. USDF Intro Level Test A Starter Horse

1 B. USDF Intro Level Test A Starter Rider

1 C. USDF Intro Level Test A Open

2 A. USDF Intro Level Test B Starter Horse

2 B. USDF Intro Level Test B Starter Rider

2 C. USDF Intro Level Test B Open

3 A. USDF Intro Level Test C Starter Horse

3 B. USDF Intro Level Test C Starter Rider

3 C. USDF Intro Level Test C Open

4 A. USEF Training Level Test 1 Junior Rider

4 B. USEF Training Level Test 1 Senior Rider

5 A. USEF Training Level Test 2 Junior Rider

5 B. USEF Training Level Test 2 Senior Rider

6 A. USEF Training Level Test 3 Junior Rider

6 B. USEF Training Level Test 3 Senior Rider

7 USEF First Level and above, Specify Test, Junior or Senior Rider

8 USEA Eventing, Specify Test, Junior or Senior Rider

9 Western Dressage, Specify Test, Junior or Senior Rider

Important Dressage Rules

****If you are planning to enter into any Dressage class - please note that an acknowledgement agreement must be signed and accompany your entry form. They can be found on the Horse Park of NJ's website.****

Any cross entries or special requests MUST be listed on your Dressage Entry form. Once ride times are posted, NO CHANGES WILL BE MADE if there is a conflict and it has not been identified on your registration form. No exceptions.

If you are cross entered, and there is a delay or change of time with your other class(es), your dressage test takes priority; your dressage time will not be changed due to a delay/change of time in your cross entered class(es). This has been discussed and agreed upon by all members of the show committee.

All ride times will be firmly adhered to.

You MUST check in with the ring steward no later than 5 minutes prior to your ride time. If you do not check in 5 minutes prior to your ride time and you are not at the ring for your ride time, you will forfeit your ride. However, should you so choose, you may ride your test concours at the end of the day.

ARRIVE EARLY!! Allow yourself enough time to check in with the secretary, tack up, warm up, and check in at the ring 5 minutes before your ride time. Remember, if you are not ready to ride at your scheduled time, you forfeit your ride.

We want all horses and riders to enjoy the show and running the dressage portion of the Fun Show in a timely manner is paramount. Thank you!

Jumpers Classes

Entry Fee for each class \$15.00

Puddle Jumpers

Open to all. Fences not to exceed 2'

Class 18 - Table II Sec. 2(b)

Class 19 - Table II Sec. 2(c)

Class 20 - Table II Sec. 2(b)

Grand Champion and Reserve Champion

Itty Bitty Jumpers

Open to all. (T.I.P. Low Jumper Jr/Sr) Fences 2' 3"

Class 21 - Table II Sec. 2(b)

Class 22 - Table II Sec. 2(c)

Class 23 - Table II Sec. 2(b)

Grand Champion and Reserve Champion

Level 0 Jumpers

Open to all. Fences 2'6"

Class 24 - Table II Sec. 2(b)

Class 25 - Table II Sec. 2(c)

Class 26 - Table II Sec. 2(b)

Grand Champion and Reserve Champion

Level 1 Jumpers

Open to all. (T.I.P. High Jumper Jr/Sr) Fences 3'

Class 27 - Table II Sec. 2(b)

Class 28 - Table II Sec. 2(c)

Class 29 - Table II Sec. 2(b)

Grand Champion and Reserve Champion

Thoroughbred Incentive Program T.I.P.



To encourage the retraining of Thoroughbreds into other disciplines upon completion of careers in racing or breeding, T.I.P. offers sponsorship for Thoroughbred-only classes and divisions, high point Thoroughbred awards at open horse shows and competitions.

7/14/2019 Schooling Fun Show at the HPNJ

Hunter High Point Thoroughbred – Jr/Sr High (2'6")

Hunter High Point Thoroughbred – Jr/Sr Low (2'3")

Very Green Hunter Division – Jr/Sr (2')

Jumper High Point Thoroughbred – Jr/Sr High (3')

Jumper High Point Thoroughbred – Jr/Sr Low (2'3")

Introductory Level Dressage High Point Jr/Sr

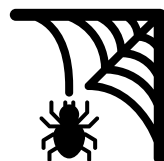
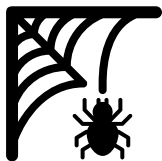
Training Level Dressage High Point Jr/Sr

First Level Dressage High Point Jr/Sr

Second/Third/Fourth Level Dressage High Point Jr/Sr

Rules and Regulations

To be considered for TIP awards, you must participate in at least 2 classes/tests within your division (you may certainly participate in more!). Your top 2 places will be considered in calculating your total points in order to determine each High Point Award. Awards WILL NOT be mailed, so please be sure to pick them up at the secretary stand in the office.



NEW FOR OCTOBER

Schooling Fun Show Costume Class

Class starts at 12pm in the warm-up ring
(opposite the indoor)

SFS Costume Class – Sponsored by The Lay Family
Entry Fee for each rider \$15.00

Class 50 - Open to all. Horses and ponies can be led or ridden. Participants will be judged on originality, costume design, theme, functionality, and overall appearance. Please remember to be safe for you and others in the class.

Now let's see those great ideas!

Prizes 1st Place is a Special Prize - Ribbons 1-6



West Ring Schedule

9:00 a.m. Start

Schooling permitted until 8:45

Class 28 – Standardbred Equitation W/T or Pace

Class 29 – Standardbred Pleasure W/T or Pace

Class 30 – Standardbred Pleasure W/T/C or Lope

****Schooling X-rails classes 4-6****

Class 1 - Beginner Rider W/T

Class 2 - Beginner Rider W/T/C

Class 3 - Beginner Rider X-rails

Class 4 - Beginner Hunter X-rails

Class 5 - Beginner Hunter X-rails

Class 6 - Beginner Hunter U/S

NOT BEFORE 10:00 AM

****Schooling classes 7-9****

Class 7 - Green Hunter O/F 2'

Class 8 - Green Hunter O/F 2'

Class 9 - Green Hunter U/S

****Schooling classes 10-12, 16, 17****

Class 10 - Low Hunter O/F 2'3"

Class 11 - Low Hunter O/F 2'3"

Class 12 - Low Hunter U/S

Class 16 - Hunt Teams 2'3"

****Schooling classes 13-15, 17****

Class 13 - High Hunter 2'6"

Class 14 - High Hunter 2'6"

Class 15 - High Hunter U/S

Class 17 - Derby 2'3" and 2'6" (To run consecutively
with selected fence height)

Class 46 – Pleasure Horse or Pony

Class 47 – Bridle path Hack

Class 48 - Cross Country Pleasure

East Ring Schedule

9:00 a.m. Start

Flat only schooling permitted until 8:45

Class 18 - Puddle Jumper

Class 19 - Puddle Jumper

Class 20 - Puddle Jumper

Class 21 - Itty Bitty Jumpers 2'3"

Class 22 - Itty Bitty Jumpers 2'3"

Class 23 - Itty Bitty Jumpers 2'3"

Class 24 - Level 0 Jumpers 2'6"

Class 25 - Level 0 Jumpers 2'6"

Class 26 - Level 0 Jumpers 2'6"

Class 27 - Level 1 Jumpers 3'

Class 28 - Level 1 Jumpers 3'

Class 29 - Level 1 Jumpers 3'

Standardbred Division

To be held in the West Ring

Entry Fee for each class \$15.00

Standardbred Division

Open to Standardbreds in English or Western tack. Horses may Trot or pace, canter or lope.

Class 28 – Standardbred Equitation W/T or Pace

Class 29 – Standardbred Pleasure W/T or Pace

Class 30 – Standardbred Pleasure W/T/C or Lope

Grand Champion and Reserve Champion

English Pleasure Division

Entry Fee for each class \$15.00

Pleasure Division

Open to all horses and pony's ridden in English tack.

Class 46 - Pleasure Horse or Pony

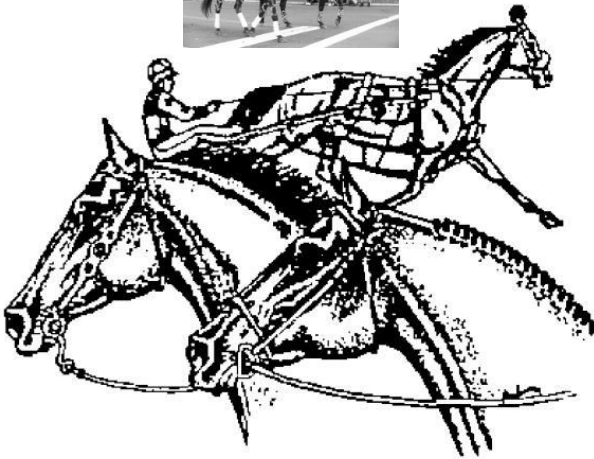
Class 47 - Bridle Path Hack

Class 48 - Cross Country Pleasure Simple Test (!)

Grand Champion and Reserve Champion

**Standardbred Pleasure Horse Organization
of New Jersey**

**Proudly supports the Horse Park of NJ
& the Fun Show**



Nothing standard about them!!!



DON E. MILLER

24 Hour Service Available

SEPTIC SERVICE^{INC.}

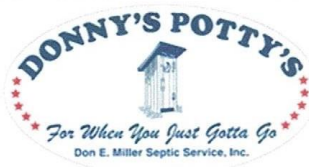
NORTH HANOVER TWP, NJ

(609) 758-2700

#1 in the #2 business since 1963

- * SEPTIC TANK CLEANING AND MAINTENANCE
- * SEPTIC SYSTEM REPAIRS, INSTALLATIONS, & INSPECTIONS
 - * PORTABLE TOILET RENTALS
 - * GREASE TRAP & LIFT STATIONS
 - * FILTER & PUMP INSTALLATIONS & REPAIRS

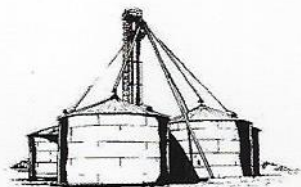
**HAPPY TO SUPPORT OUR LOCAL EQUESTRIANS! MENTION THIS AD TO
RECEIVE \$20.00 OFF YOUR NEXT SERVICE / RENTAL**



Angies list.

www.angieslist.com/review

**REVIEW
US!**



STERN FARMS LLC

CREAM RIDGE, NEW JERSEY 08514

Rick Stern

Family owned and operated

144 Emleys Hill Road

Cream Ridge, NJ 08514

STERN FARMS

Phone 609.259.6761

GRAIN HAY STRAW

Email. sternfarmsltdy@spoonline.net

JUMPS BY JOSH

Jumps by Josh is a proud sponsor of the
Fun Show at The Horse Park of New Jersey!



- Custom jumps
- Cavalettis
- Fillers, boxes, and walls
- Horse Show Rentals
- Safe and durable
- Packages available

The quality you want from an expert craftsman

Contact Josh Bedell
cell 732.597.8724 email joshuabedell15@gmail.com

Horse Park of New Jersey

Would like to thank the Show Committee who give
their time and energy to the Fun Shows.

And to all the volunteers that share their time and talents,
including the show officials, office staff, and sponsors- Thank
You!

*THANK YOU to the "Just Us" Crew that spends
many nights gathered around planning this horse
show. It's always a great time and I appreciate all
your hard work, support, laughs, and enthusiasm
that always makes it fun! Love you Lori*

Horse Park of New Jersey Sponsors

Moslowski Excavating
Parma Company
Rick's
Robbinsville Hampton Inn & Suites
Roy's Deli
Skylands Saddlery
Tap Into Horses
The Fabulous Horse
Tractor Supply
Blue Bridle
Carolina Arena Equipment
Colts Head Veterinary Services
Farm Bureau
Farm Credit East
Foundation Equine
Freehold Cartage Inc
Garden State Equine Dentist
Hampton Inn East Windsor
Harter Equipment
Hoover
Kubota
LaPiazza
EME

We Thank you for your support